



# MONTHLY MEMBERSHIP PROGRESS REPORT

District 323E2

Results as of: 11/30/2015

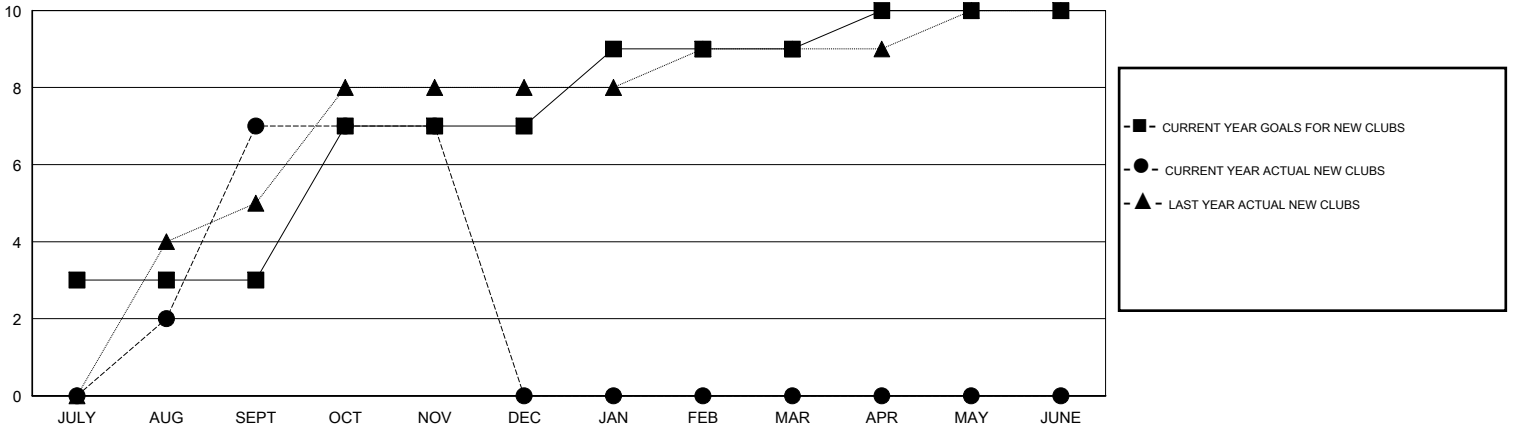
GMT: KAMLESH JAIN

LOCATION INDIA

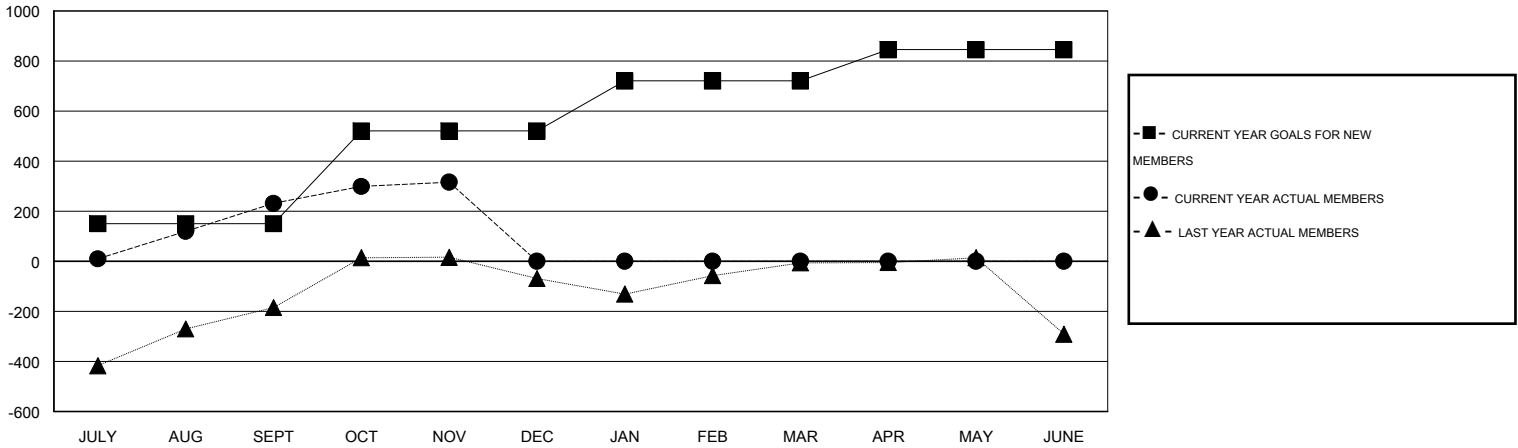
GMT CA 6

Clubs					Members				
RESULTS FOR 2015-2016					RESULTS FOR 2015-2016				
QUARTER	NEW CLUB GOAL	NEW CLUBS	DROPPED CLUBS	NET GAIN/LOSS	QUARTER	NEW MEMBER GOAL	CHARTER AND NEW MEMBERS ADDED	DROPPED MEMBERS	NET GAIN/LOSS
JULY/AUG/SEPT	3	7	1	6	JULY/AUG/SEPT	150	399	168	231
OCT/NOV/DEC	4	0	0	0	OCT/NOV/DEC	370	150	65	85
JAN/FEB/MAR	2	0	0	0	JAN/FEB/MAR	200	0	0	0
APR/MAY/JUNE	1	0	0	0	APR/MAY/JUNE	125	0	0	0

GOALS AND ACTUAL NEW CLUBS CUMULATIVE



GOALS AND ACTUAL MEMBERS CUMULATIVE



DROPPED CLUBS: 1	71 CLUBS OF 138 ADDED 1 OR MORE NEW MEMBERS	<u>GENDER DISTRIBUTION</u>	
		MALE	4,744 (83.65%)
<u>DROPPED MEMBERS</u>		FEMALE	927 (16.35%)
DECEASED	8	<a href="#">CLICK HERE FOR HEALTH ASSESSMENT DATA</a>	
CLUB CANCELLED	0		
OTHER	225		
TOTAL	233	FAMILY UNIT MEMBERS	1,494
		HEAD OF HOUSEHOLD	703
		NON-HEAD OF HOUSEHOLD	791